

# Scales - Major to Minor. Related by Key Signature.

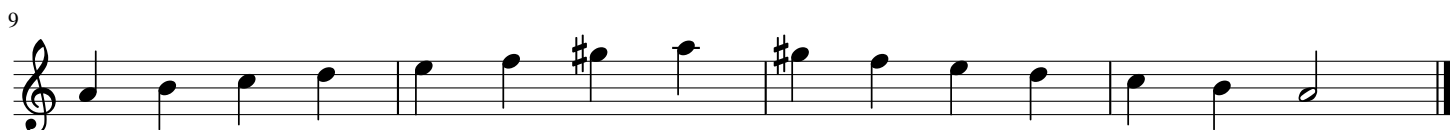
## Major Scale



## Natural Minor- 6th Mode of the Major Scale



## Harmonic Minor -Raise the 7th note both ways



## Melodic Minor - Raise 6th and 7th on the way up and cancel on the way down (Natural Minor)



This is a simple and logical method to work out the transition from Major to related Minor (by Key Signature.)

Once you have learnt the Major Scale, Count up to the 6th note of that scale, and play from that note (may need to drop the octave depending on which scale you are working on) upwards for an octave using the same key signature.

That gives you the natural minor scale.

Then play the same again but raise the 7th note of the minor scale by a semitone, both ways  
This gives you the Harmonic Minor.

Next, play the same scale again, but this time, raise the 6th and 7th on the way up and revert back to the normal 6th and 7th on the way down (natural Minor again)

This gives you the Melodic Minor Scale.

By following this process, you will be playing all 4 scales in a very short period of time.